



SPRING REWARDS NEWSLETTER - 2024

Welcome

The spring outdoors is calling our names again! Time to let the warm sun beat down on our cold winter faces. Oh how exciting it is to enjoy another season with family and friends. We welcome you back to Feeney's. We are here to help you create another season of beautiful outdoor memories.

Close your eyes and picture your serene backyard ready for relaxation and enjoyment. Our hand picked selection of colorful fresh annuals, perennials and vegetables are like no other. Ready to uplift and create a warm summer retreat. Be sure to check out our annual tree sale and create that shady nook that your new tree will create today and for the future.

While still dreaming of your perfect backyard, picture yourself on outdoor furniture that is so cozy you will think you are indoors and comfortable for hours. It's possible!!

But let's not forget the best part of the warm weather, grilling time! Reap the benefits of fresh out of the garden fruits and vegetables. Enjoy burger, steak, and smash potato seasonings to margarita and pina colada mixes. Summer entertaining just got more delicious!

So let the warmth of spring and summer energize and fill your spirit with gatherings, the beautiful bounty of the season and memories to last a lifetime.

Thank you for coming to our backyard!

Janet and Kathleen



Spring - A Season to Refresh

The Flower Shoppe at Feeney's



Come smell the roses at Feeney's. Silk roses that is! We have created a floral shop for our extensive silk flower collection. Just like a French Persian flower shoppe with exquisite colors galore, you will find single stem and unique arrangements along with containers to enhance your home decor. Come enjoy the flowers today!

Michel Design



Now is the time to add some spring color. We now offer many additional patterns and accessories to the beloved Michel Design line. We have added candles, diffusers, and so much more. They are the perfect gift or addition to your home spring decor. Our collection of wreaths, silk greens and single stems add a quick burst of color, while some "Smell of Spring" potpourri will transport your senses to the beauty of the season.

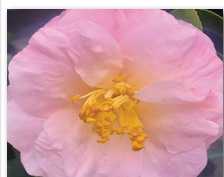
Scout Bags



We are excited to add Scout bags to our boutique. Scout bags are durable, light weight, water resistant and easy to wipe clean. From trunk storage, to lunch bags and now baby accessories, Scout bags are ideal for your everyday life. Their fresh color patterns uplift our busy active lifestyles at home and at the beach, making them the perfect functional and fashion accessory for the summer and year round.

Camellia

Camellias are broad leaf evergreen shrubs that add beauty and color to the landscape when few plants are in bloom. Our northern varieties are known as "cold hardy" Camellias. These beauties grow as much as a foot a year and provide a wonderful green screen year-round. Choose a partial sun location with moist well drained soil.



Camellia japonica 'April Blush' - 8'-10' tall x 6'-8' wide and blooming in late winter through mid-spring producing large 4"-5" elegant semi-double flowers with soft-pink petals and bright yellow anthers. The glossy dark green foliage provides amazing contrast and a wonderful backdrop for the beautiful flowers.



Camellia sasanqua 'Pink Serenade' - Long-lasting color through fall and into early winter, featuring a profusion of showy single flowers with deep pink. At 4"-5", a strong upright habit of 8' to 12' tall and around 8' wide that can be grown as a large shrub or small tree.

Christmas Year Round



The holidays have found a year round home at Feeney's. We have been asked for years to keep the magic alive and so we have dedicated our entire Department 56

room to everything holiday. Now you can enjoy all the joy the season brings today and everyday. Stop by for some magic!

Summer Sun

As the hot sun begins to shine it's skin cancer awareness time. Not all hats are equal. We only carry the finest hats with UPF ratings (and tested for UV radiation blocking capabilities).



Whether working in the garden or relaxing on the beach our fashionable, comfortable and packable hats will keep you safe and cool all summer long!

Barbecue Time

The flavors of the summer are here! Our extensive collection of Stonewall Kitchen mustards, dressings, aiolis, risotto, and more



take any backyard barbecue to gourmet level. They offer exceptional seasonings that infuse life into any everyday meal. While

relaxing and enjoying your meal be sure to sip one of our cocktail mixes to round out the perfect party.

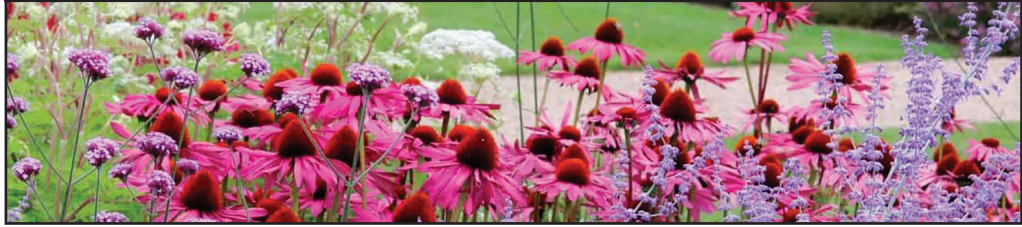


Ronald McDonald House Charities®

Keeping Families Close

Thank you, Thank you! Once again your generous holiday donations to the "Santa Cause Campaign" has made such a difference in so many families at the Philadelphia Ronald McDonald House. It is with great excitement that we were able to present them with a check for \$9,771.00. It will sponsor a room for the year for visiting families. Thank you everyone who contributed to this worthy cause.

Meadows & Eco Lawns Alternatives to Conventional Lawn Areas



Eco lawns and meadows offer a range of environmental and practical benefits. Some of the key benefits includes:

- Greater biodiversity ecolawns and meadows consist of a diverse mix of native grasses, wildflowers, and other plants. This diversity results in and supports a variety of different insects, birds, and other wildlife.
- Water Conservation: native grasses and wildflowers in ecolawn and meadow are typically well adapted to local climates, reducing the need for excessive watering.
- Eco lawns and meadows require much less maintenance and far fewer inputs as compared to a traditional lawn. Finally pollinator habitat is substantially improved by the creation of eco lawns and meadows. The net result being improved health of the local ecosystem, and enhanced pollination of nearby plants.

Planting For Pollinators



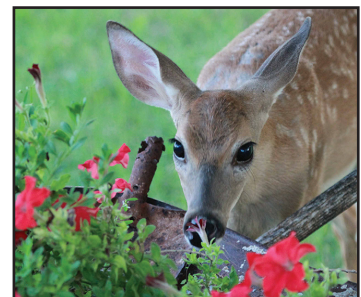
Pollinators such as bees, butterflies, birds, and other insects, play a crucial role in the pollinations of many flowering plants. The following are a few tips to attract and support pollinators:

- Select a diverse mix of flowers with varying bloom times. This provides a continuous food source for the pollinators.
- Provide a range of colors, shapes, and sizes to the different pollinator species. Try planting in clusters whenever possible.
- If possible, avoid pesticide use as they be harmful to pollinators.
- Create a simple yet effective water source for your pollinators. This is easily accomplished by putting a few flat stones in a shallow dish or bowl with some water. Remember that even small gardens or even balcony planters can positively impact pollinators. By creating a pollinator friendly environment, you contribute to the overall health of the ecosystem while also enhancing the beauty of your surroundings.

Wildlife Friendly Gardening

Wildlife friendly gardening involves creating and maintaining garden space that provides habitat and sustenance for a variety of wildlife. The following are some key principles and practices for wildlife friendly gardening:

- When possible-choose native plants. Native plants are well adapted to the local climate and support local wildlife.
- Provide food sources by incorporating plants that produce fruits, seeds, nectar and pollen in order to attract a diverse array of wildlife. Consider leaving seed heads on the plants in the fall in order to provide winter food for the birds.



- Water features are a great way to attract wildlife. Install a birdbath, pond or small water feature to provide a water source for wildlife for drinking and bathing.
- Lastly, provide shelter such as bat houses, bird houses, and insect hotels. Different wildlife species have different habitat preferences, so offering a variety of habitat structures increases the diversity of your garden inhabitants. Feeney's offers a variety of habitat structures to help you in this process.

Climate Change and Your Garden

Adapting your garden to climate changes involves selecting and growing plants that can thrive in hotter and potentially drier conditions. The following are some keys for creating a garden that will flourish in these conditions:



- Whenever possible choose native plants. These plants are already adapted to local conditions making them more resilient to changes in temperature and precipitation.
- Consider using drought tolerant plants. They have adaptations such as deep root systems, and succulent leaves that allow them to flourish. Some of our favorites include: Crape Myrtle, Lantana, Rosemary, Sedum, Ice Plant and Liriope.
- Mulch! Apply a layer of mulch around plants in order to retain soil moisture, regulate soil temperatures, and suppress weeds.
- Finally use efficient watering methods such as deep irrigation and soaker hoses that deliver water directly to the plants root zone.

Feel free to consult with our knowledgeable garden center staff for additional suggestions.

The Patio Shoppe at Feeney's



We are proud to be one of the areas largest dealers of Hanamint patio furniture. This allows us to offer you exceptional pricing and selection. Hanamint is an industry leader in affordable luxury outdoor furniture. With their graceful patterns, timeless elegance, durability, high quality and hand detailed finishes it continues to be our more popular line with the highest customer satisfaction.

Their Mayfair Estate collection offers club chairs, love seats and sofas with deep seating that will surround you in comfort. Their sectional is customizable to fit both straight and rounded walls and deck spaces. The clean lines of their chairs and tables make this cast aluminum line both timeless and easy to maintain. Accessorize with coffee, side and console tables, along with fire pits, bar stools and a round pedestal bar.

Let our design team help you create an outdoor space with the elegant Mayfair Estate collection or any one of our other exquisite lines. There's no time like now to enjoy family and friends in comfort!



No Till Gardening



What is it and what are the benefits? No till gardening is a gardening approach that involves minimal disturbance of the soil. Instead of turning over the soil, gardeners leave it undisturbed and build layers of organic matter on top. This gardening strategy offers several benefits. First, it helps to improve soil structure and minimize erosion. It also encourages the growth and activity of microorganisms, which play an important role in nutrient cycling and plant health. Because it doesn't disturb the soil surface, no till gardening is a great strategy to suppress weeds. Finally, as a result of healthier soil and increases microbial activity, plants grown in no till gardens often show increased resistance to pest and disease.

Ask The Expert

Can I Grow Veggies in a Container

Yes, you can. You don't need a plot of ground in order to grow fresh vegetables. In fact, many vegetables lend themselves well to container gardening. Some perfect vegetables for container gardening include: Cucumber, Bush Cucumber, Eggplant 'Fairy Tale', any leaf lettuce, Pepper 'California Wonder', Tomatoes 'Patio and Super Sweet 100, Watermelon 'Bush Sugar Baby'. This



list is by no means a comprehensive one. For the most part, growing vegetables in a container is only limited by your imagination, and the size of the container you use.

Why are the new leaves on my boxwood cupping?

The damage that is being described is the result of the Boxwood Psyllid. Boxwood Psyllid are tiny, greenish sucking insects that are causing the distortions in the leaves.

Fortunately, the damage they cause is largely cosmetic. If necessary, treat affected plants with Bonide Eight or Systemic Insect control in early May.